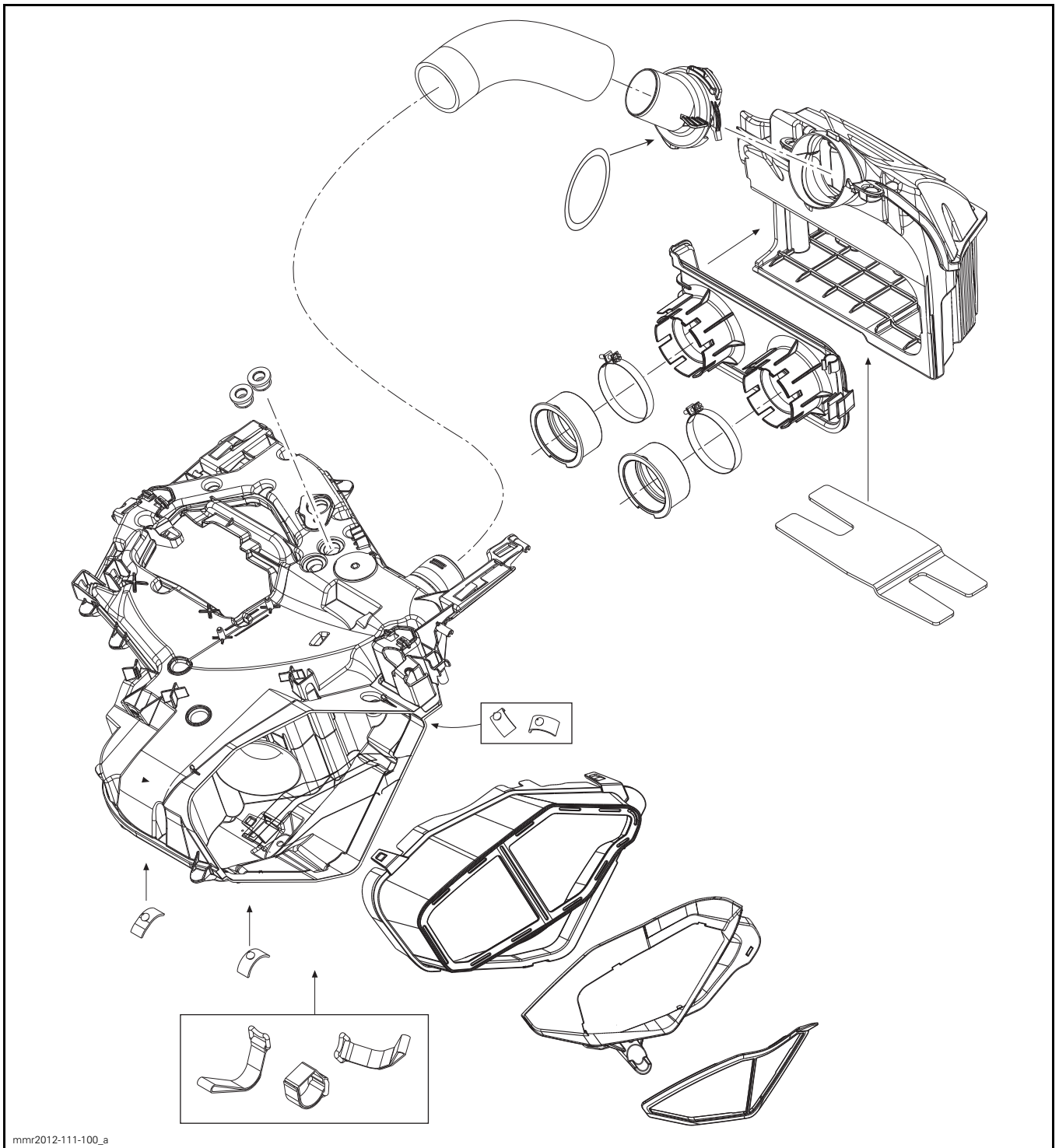


AIR INTAKE SYSTEM



GENERAL

During assembly/installation, use the torque values and service products as in the exploded views.

Clean threads before applying a threadlocker. Refer to *SELF-LOCKING FASTENERS* and *LOCTITE APPLICATION* at the beginning of this manual for complete procedure.

⚠ WARNING

Torque wrench tightening specifications must be strictly adhered to. Locking devices when removed (e.g.: locking tabs, elastic stop nuts, cotter pins, etc.) must be replaced.

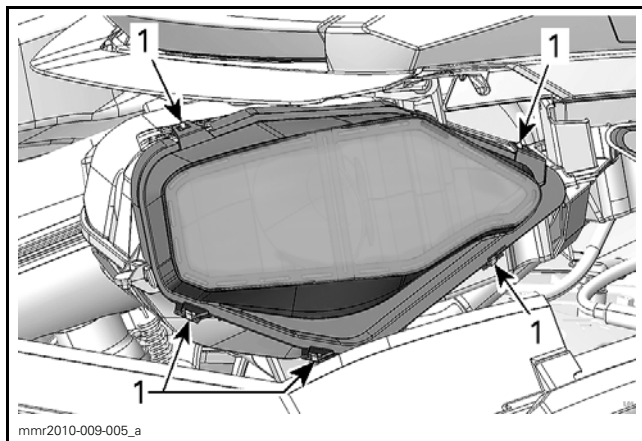
NOTICE Hoses, cables or locking ties removed must be installed as per factory specifications.

PROCEDURES

AIR FILTER

Air Filter Removal

1. Refer to *BODY* subsection and remove the following body parts:
 - Upper side panels
 - Hood.
2. Release the 5 tabs that retain the air filter to the secondary air intake silencer.



TYPICAL

1. Retaining tabs

3. Pull the air filter off secondary silencer.

Air Filter Cleaning

Clean with fresh water and mild soap.

Replace air filter as required.

NOTE: If the filter is very dirty, clean the interior of secondary air intake silencer at the same time.

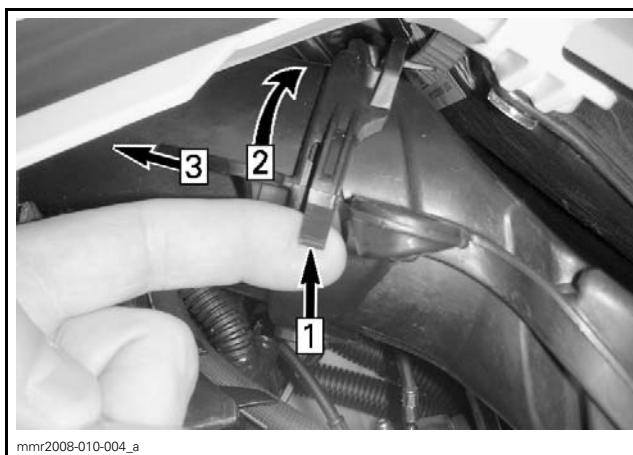
Air Filter Installation

Installation is the reverse of the removal procedure.

PRIMARY AIR INTAKE SILENCER

Primary Air Intake Silencer Removal

1. Remove LH side panels.
2. Remove drive belt guard, refer to *DRIVE BELT* subsection.
3. Disconnect the connector tube adapter from primary silencer as follows:
 - 3.1 Lift tab on rear section of connector tube.
 - 3.2 Twist tube adapter counterclockwise and pull it off the primary silencer slightly.



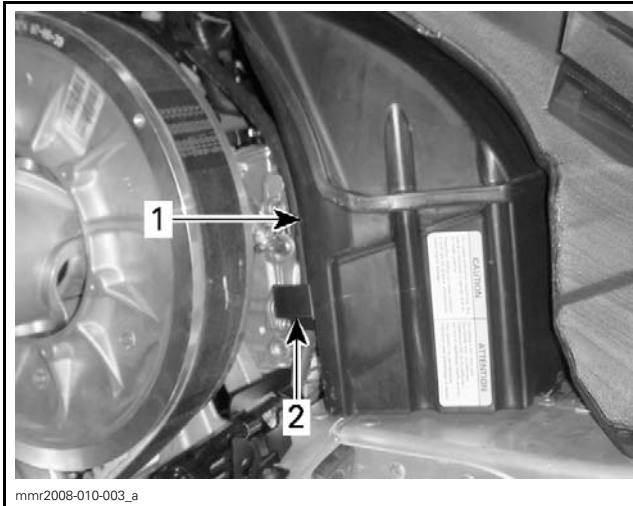
TYPICAL

Step 1: Lift tab

Step 2: Twist adapter counterclockwise

Step 3: Pull off

4. Press locking tab securing the primary air intake silencer and pull silencer out of adapter plate.



1. Primary air intake silencer
2. Primary intake silencer locking tab

Primary Air Intake Silencer Installation

Installation of the primary air intake silencer is the reverse of the removal procedure. However, pay attention to the following:

- Ensure the silencer is properly inserted into the adapter plates groove.
- Ensure the silencer is pushed completely in and that the locking tab is fully engaged.
- Ensure the silencer and connector tube adapter are properly engaged and locked together.

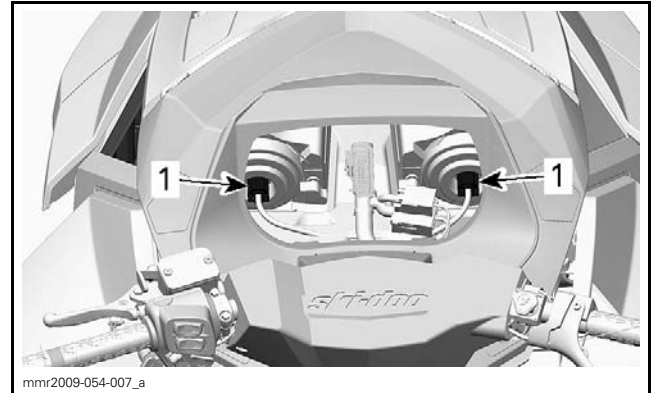
NOTICE Be careful not to damage foam during installation.

SECONDARY AIR INTAKE SILENCER

Secondary Air Intake Silencer Removal

NOTE: The secondary air intake silencer is removed as a unit with headlight/gauge module.

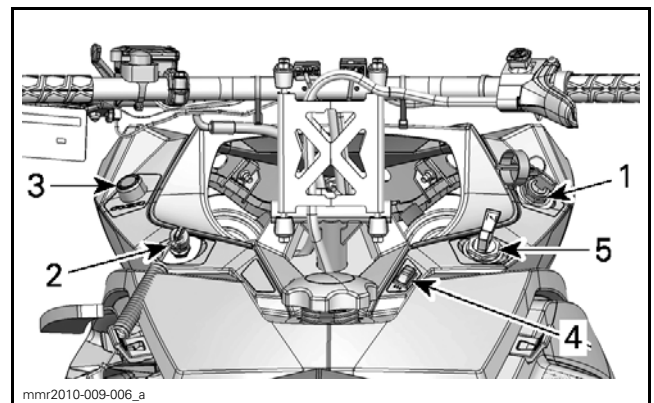
1. Refer to *BODY* subsection and remove the following body parts:
 - Side panels
 - Hood
 - Console.
2. Remove the multifunction gauge. Refer to *LIGHTS, GAUGE AND ACCESSORIES* subsection.
3. Disconnect both headlight connectors.



TYPICAL

1. Headlight connectors

4. Electrically disconnect the following items on the headlight/gauge module, as applicable to model:
 - Ignition switch
 - Engine cutout switch
 - RER™ button (reverse)
 - Thumb and grip heat control switch.
5. Remove the choke lever retaining nut and push the lever under the headlight/gauge module.



TYPICAL - AS APPLICABLE TO MODEL

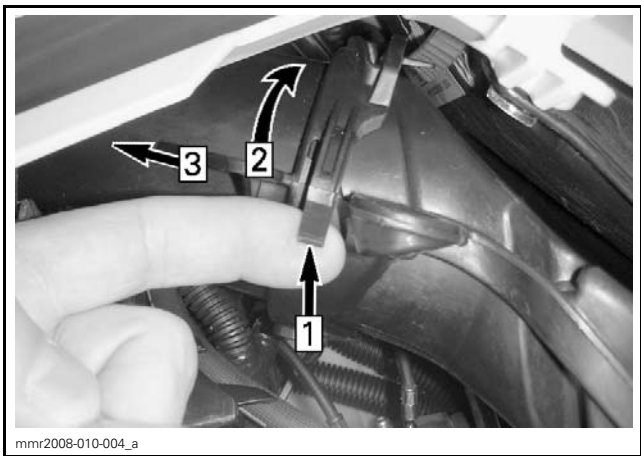
1. Ignition switch
 2. Engine cutout switch
 3. RER button
 4. Thumb and grip heat control switch
 5. Choke lever retaining nut
6. Disconnect the carburetor vent tubes from the top of the secondary air intake silencer.

Subsection XX (AIR INTAKE SYSTEM)



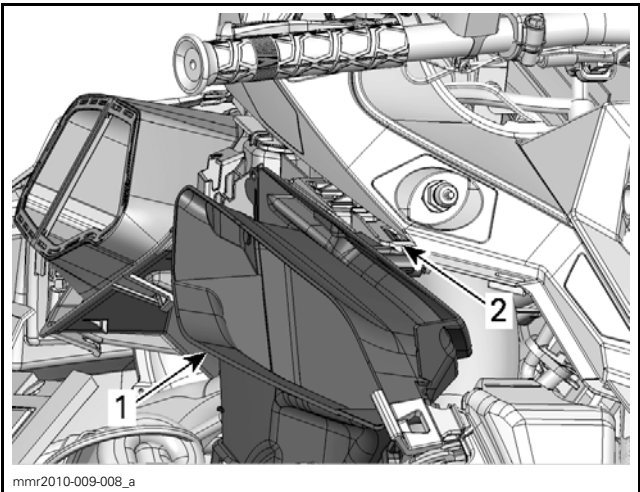
TYPICAL
1. Carburetor vent tubes

7. Disconnect the connector tube adapter from the primary air intake silencer as illustrated.



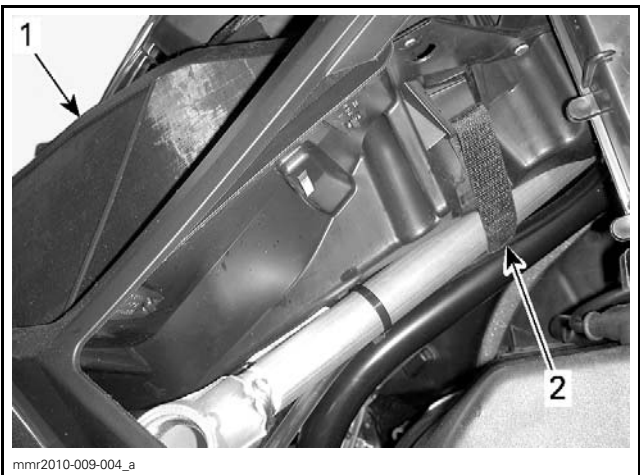
TYPICAL
Step 1: Lift tab
Step 2: Twist adapter counterclockwise
Step 3: Pull off

8. Remove the air outlet duct by lifting retaining tab.



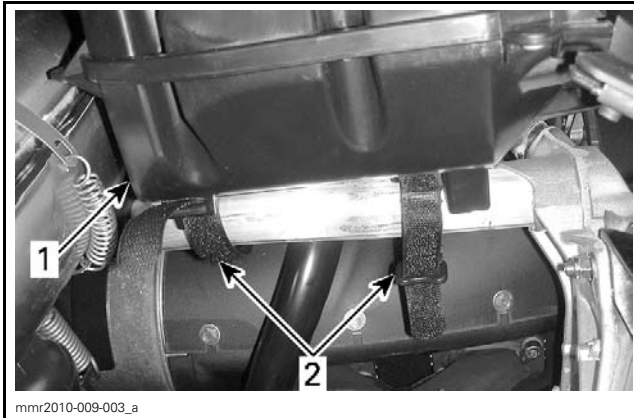
TYPICAL - LH SIDE OF HEADLIGHT/GAUGE MODULE
1. Axial fan outlet duct
2. Retaining tab

9. Unfasten the Velcro strap located on the LH rear portion of the secondary air intake silencer.



TYPICAL
1. Air filter
2. Aft Velcro strap

10. Unfasten the Velcro straps retaining the front lower portion of the secondary air intake silencer.



TYPICAL

1. Secondary air intake silencer
2. Velcro strap

11. Take note of the wiring harness routing to the headlight/gauge module, then feed the harness backwards out as you remove the secondary silencer and headlight/gauge module from the vehicle.

Secondary Air Intake Silencer Removal from headlight/gauge module

To separate secondary air intake silencer from headlight/gauge module, refer to *HEADLIGHT/GAUGE MODULE* in *BODY* subsection.

Secondary Air Intake Silencer Installation

The installation is the reverse of the removal procedure. However, pay attention to the following items

- Be sure to route the electrical harness as noted prior to removal.
- Correctly route and fasten the 3 Velcro straps retaining the silencer.
- Reconnect all electrical components disconnected from headlight/gauge module.
- Reconnect the carburetor vent tubes.